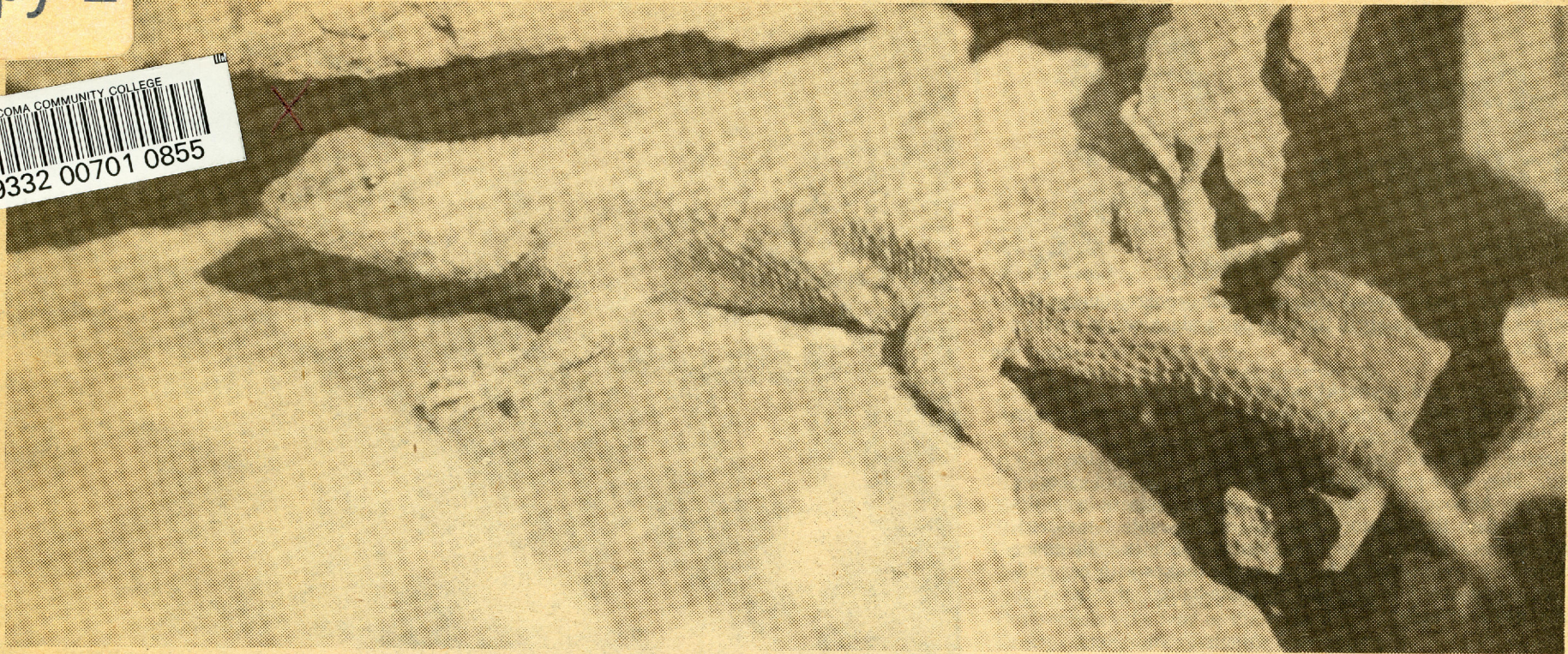


copy-2



The Collegiate Challenge

I believe I've found the missing link between animal and civilized man. It is us.
— Dr. Konrad Lorenz

VOLUME XII NO. 10

TACOMA COMMUNITY COLLEGE

FRIDAY, JANUARY 21, 1977

TCC students favor Capital punishment

by Steve Hunt

During a sampling of TCC students last week, the question of capital punishment drew an almost unanimous positive response while "Gary Gilmore's Right to Die" brought mixed emotions, even though most of the dozen interviewed thought he should be allowed to die.

The only dissenting vote was Debbie Freeman's who, even though in favor of letting Gary Gilmore have his "right to die," was openly distraught at the idea of executing people by re-instituting the death penalty.

Hesitating, Ms. Freeman said "No, I'm not for capital punishment. I think it's very cruel," adding, "As for Gary Gilmore, he would try to kill himself anyway

so we should let him die."

The question of capital punishment, surprisingly, was defended, with the majority of students feeling that, just or not, it should be re-instituted as a "deterrent for crimes such as premeditated murder."

"Except in accidental death, I believe capital punishment is a 100 percent deterrent to premeditated murder and should be made mandatory and enforced," said John Fitzpatrick, a first-year TCC student.

Fitzpatrick referred to the local groups and organizations which are opposed to capital punishment as our "bleeding-heart society." He emphatically argued "If a person kills during a

holdup, our present system takes care of that mans family while he's serving a life sentence, with programs such as welfare and other state and federal benefits. What happens to the family of the man he killed? His wife gets nothing!"

Bernice Bohannon provided a more gruesome view with a quick yes on the capital punishment issue, and a thumbs up (and down) for Gary Gilmore. "He should suffer for awhile first. Then, maybe in five years, he should be killed."

Responding to the Gary Gilmore question, Dorothy Wimberly gave a "Yes, he should be allowed to die if that's what he wants," continuing with "It's

really rather sickening—everybody trying to keep him alive—he deserves it."

Citing several examples of criminals being paroled after serving a "life sentence" of seven years and, once outside, committing another murder, John Hunter stated "A life sentence should be a lifetime sentence with no parole! I'm in favor of capital punishment, but I don't think it would deter crime."

Gary Thompson felt that a life sentence, rather than death, is not a deterrent to cold blooded murders. "After receiving a life sentence the criminal has nothing to lose if he kills again, knowing all he'll receive is another life sentence," said Thompson,

adding that Gary Gilmore has "made his choice" and should be allowed to die.

The question of capital punishment, always a serious one, now is being decided on a state-by-state level.

In June 1972 the Supreme Court outlawed the death penalty, but left open the opportunity for states to adopt their own laws on capital punishment. Since then 15 states (not including Washington) have re-instituted the previously outlawed death penalty.

The death penalty, defined by the Supreme Court as "cruel and unusual punishment," including hanging, electrocution, firing squad, and death by cyanide.

Cafeteria is finally at "break-even" point

by Lila Lee Vigil

The Food Service Operation (FSO) is at last in the black, after a perilous period of self-examination.

Just a year ago Collegiate Challenge reported that the FSC was losing gross amounts of money and that the operation was on the brink of closure. At the request of T.C.C., Washington State's Office of Program Planning & Fiscal Management (OPP&FM) conducted an in-depth study of the FSO.

The study revealed that over a period of several years the FSO had been losing a lot of money. The study was able to pinpoint several problem areas concerning management of the operation. The study suggested a number of recommendations that would help steer the FSO on a

Carl Brown, Dean of Student Services, who is the direct superior to the FSC, asserts that

path leading to the "break even" point.

"In the last fiscal year the FSO did not lose money and was running in the black (breaking even)."

Brown contributes credit to the following recommendations of the OPP&FM. He said that a better and daily communication system was set up between administration and the FSO. Better

planning of fiscal management was implemented. This was achieved by monitored purchases, wisely invested funds and a decrease in inventory which eliminated excess waste. The menu was modified to include more popular foods and the closure of the snack bar in Bldg. 15, a direct recommendation of the study, was an apparently successful one. Brown said "Although the snack bar was closed there was no loss of personnel as all personnel was successfully absorbed into the cafeteria's staff."

Domi Petrinovich, FSO manager, was asked how things were going since the study. He said that at the end of the fiscal year in July the FSO was actually making money. Petrinovich asserts that the cafeteria was not set up to make money nor was it set up to lose money. It was set up to be self-supporting. He at-

tributes better communication with the administration for the better situation that the FSO finds itself in.

Another contributing factor was the closing of the snack bar. Petrinovich claims that the cafeteria is grossing slightly more than the cafeteria and the snack bar combined did. This has happened even though the percentage of students is lower this year than in previous years. He also said the use of work study students was helpful, because it cuts his labor costs.

Petrinovich said that food prices at T.C.C. were among the lowest in all campus food prices. Although Petrinovich does not expect to gross huge amounts of money in this fiscal year he does expect that the FSO will continue to be a self-supporting service.

A pleasant note is that he does not expect to raise coffee prices, at least not this year.



Student Programs Advisor, Troy Jella is also a member of the band, "Madrigal." Story on page 6.

IN THIS ISSUE	
Crime on Campus.....	2
Troy Jella.....	6
Health Center.....	8
Veterans.....	3
Editorial.....	4
Music.....	5
Restaurants.....	5
Concerts.....	5
Hobbies.....	5
Classified.....	7
New Lounge.....	7
Humor.....	7
Print Shop.....	2
Senate Meeting.....	2

RECEIVED JAN 21 1977

Crime On Campus

by Steve Hunt



After all the crime around campus which occurred during the Christmas holidays, it's about time we had a slack period such as last week.

The worst "crime of the week" involved three Hunt (no relation) Jr. High School boys and the belly dancers of TCC. Security found them "suspiciously loitering" around the gym and, after brief questioning, found all they were doing was "ogling" the belly dancers. They were promptly ordered out of the gym and escorted off campus. Although the boys had no official business here, it's hard to condemn their actions because of the subject involved. Reliable sources have indicated to me that to watch the belly-dance instructor is a "real treat." The moves she makes with her mid-section are considered the best that my white-haired informer from security has ever seen!

Other items of interest includes several valuable articles turned into security's lost & found section. A woman's purse was found (no money or ID) and the foundee has indicated that she would like to keep the purse if it remains unclaimed. Come forward and identify it or maintain silence and make an honest woman happy.

Also found were a set of keys that included a GM key and a house key. Just bring your ignition in (or house) to make a positive ID and the keys are yours.

The SHORTS this week are SHORT...a girl locked her keys in her car and left the motor running (security opened it before she ran out of gas)...two sets of diamond rings were lost...the Sweet Adelines' supply door was stuck and, again, security was called to the rescue...and lastly, our own Collegiate Challenge door was left unlocked, along with about 20 others, with an open invitation to steal us blind. The last one out should bear the responsibility of rooms left unlocked and unattended.

Budget Advisory Committee votes on priorities

TCC's Budget Advisory Committee (BAC) has met and made up a list of budget priorities for the coming school year.

The BAC is a committee made up of 4 students—Rick Bligh, Dewey Little, Shelly Waller and Larry Cates and 4 faculty — Suzanne Butschun, Loyd R. Percy, Donald Hiatt, and Chuck Summers.

The committee evaluates the previous years budget and makes recommendations to the ASTCC budget committee.

Programs, Services, and Activities given a high priority ranking by the committee were: ASB Government, The Collegiate

Challenge, Intro-Extramurals, Work-Study, Tutorial, Child Care, Student Help, Physicians' Services, McNeil Island, Spring Festival, and Clubs and Organizations.

Given average ranking by the committee were: Athletics, Forensics, Drama, and Culture and Fine Arts.

Receiving a low ranking were: Program Board, the Student Lounge, Student Center reserve, ID Cards, Women's Programs, Vehicle Maintenance, Outdoor Recreation, Films, Summer Programs, Innovative Projects, Speakers, Resource Development, Trillium, Student Social Activities and Conferences.

Periodical available

"Signs: Journal of Women in Culture and Society" is a new periodical available in the library.

"Signs" should be of interest to instructors in the social sciences,

literature, business, economics and history.

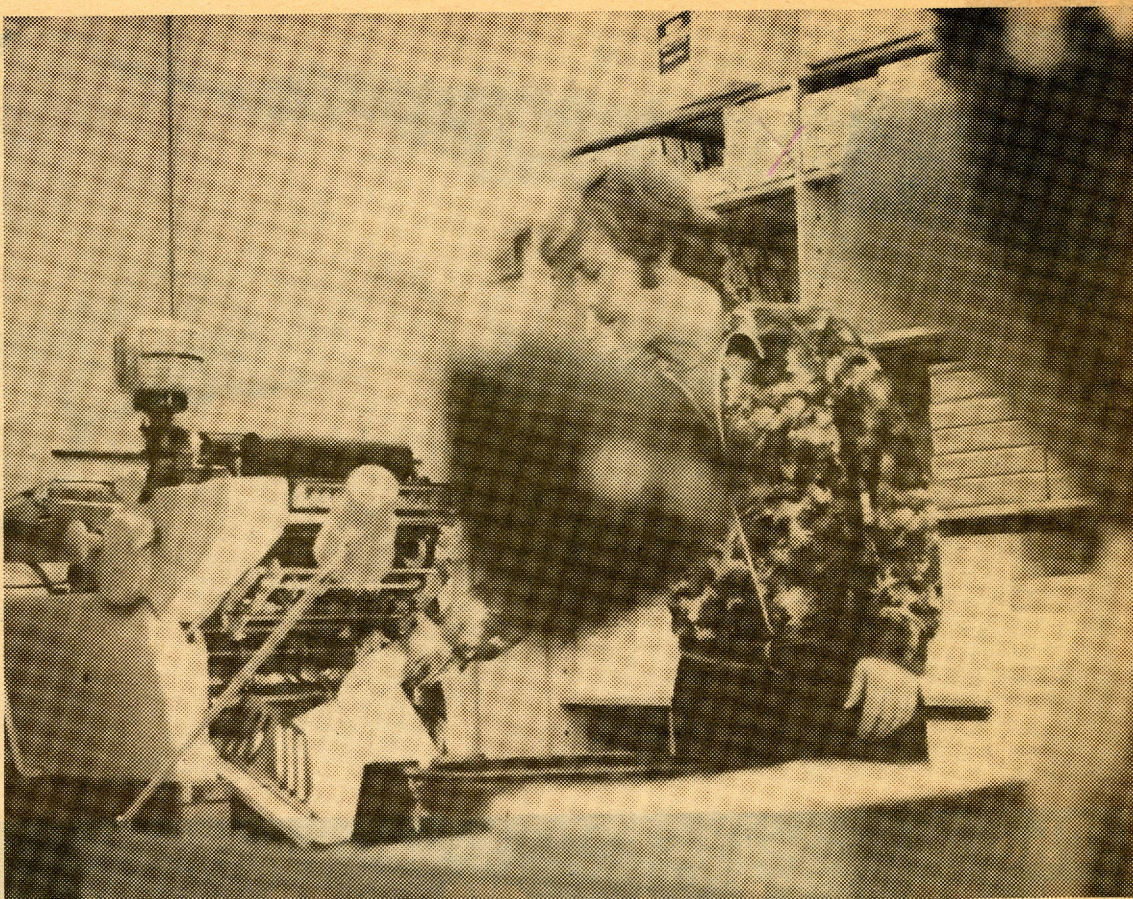
Recent issues have been devoted to the implications of occupational segregation and the role of women in contemporary China.

Cooperative action called for

Cooperative action among educators in the field of community education is called for in a report recently issued by the Advisory Council on Community College Planning. The report, accepted by the State Board for Community College Education, is the first issued by the council which is made up of representatives of public and private education at all levels and the general public.

Anita Jones, Seattle, chairperson and representing the public, said the council defined community education as any form of community based

education of an academic and occupational nature and should join with other local educators to promote more services of all kinds to the public. The council also calls for delivery of existing services to new groups and a process for citizen participation to identify community needs. It further calls for standardized state support and fees for all courses supported by public funds. The report says that each community college district should be encouraged by the SBCCE to develop a complete community education plan for the population within its district.



Dennis Findley, Print Shop manager.

Neil Herman photo

Print Shop to get new equipment

by Odean Keal

The TCC Print Shop is on an austerity program, like the rest of the campus. But according to manager Dennis Findley, replacement equipment is on order. There will shortly be a new collator and a new folder machine, to replace the old ones that have broken down.

Findley, who has managed the print shop since 1971, says its main function is for faculty support service. Most faculty printing is done on campus. The only reason for off-campus printing is that the particular job requires equipment that the TCC print shop does not have.

At present the print shop has an

offset press, a total copier system, a copy machine and a bindery machine.

Findley said the type of printing done in the print shop is testing material, brochures, flyers etc. Work is done on a non-profit break-even basis. He said the tight budget is the reason they do not take off-campus work. Also, work done for off-campus organizations would cause the print shop to be in a competitive situation with the unions, and this would be against policy.

Findley says the strict monitoring of printing and copying, has helped the shop budget, hence helped make the

new equipment possible.

He gave these procedures for requisitioning:

1. Printing requisition available in print shop must be filled out completely.
 2. Requisitions must be approved by division chair person or department head.
 3. Adequate time should be allowed for completion of request.
 4. Night and part time instructors can usually leave requests with faculty secretaries and requisitions will be processed.
- Findley's two shop assistants are trainees, paid by Manpower and Work-Study programs.

Degree applications due

Friday, January 28, is the deadline for Associate degree and high school completion applications for winter quarter graduation.

Students are requested to check their records with advisers and submit applications to the Admissions Office, Building 2, by this date.

Late applications will be deferred to spring quarter graduation.



The ASTCC Senate.

Cran Wilke photo

Los Unidos appeal to Senate

Los Unidos is appealing the decision of the Senate on their final budget. Los Unidos was budgeted \$350 for the year after they had asked for \$550. They will re-submit their request at the ASTCC Budget Committee meeting on Tuesday, Jan. 18.

Phi Theta Kappa received \$955, Winter Sports \$1,675, Vets Club got \$650, OBI \$1,675, ISO \$750, the Pep Staff got \$280 and S.K.I.N. got \$715.

Los Unidos is the only club to appeal these decisions so far.

Veteran's attendance cards due soon

VET'S! REMEMBER THE FIRST ATTENDANCE CARDS ARE DUE 24 JAN. 1977.

Effective Winter Quarter 1977. Tacoma Community College will require each student receiving veterans benefits (except High School Completion students who will continue to use the old system) to verify his attendance in class every 3 weeks. Three color coded cards are provided to you which your instructors must sign in order for you to receive benefits. The cards' due dates are printed at the top right corner of each card. You will turn in the card to Bldg. 2A on the day indicated according to your last

name. Example: John Doe will turn in his blue card on 24 Jan., his green on 14 Feb., and his red one 7 March. Your instructors must sign the card indicating that you are attending class satisfactorily according to that instructor's standards of attendance. If you miss class for any reason contact your instructors and let them know. If you discontinue class during the quarter the instructor should indicate in the last column, "If not satisfactory-LDA (last date of attendance)" the date you actually quit attending class. If you do not bring in the card you will be terminated as of the first day

of the reporting period the card covers. Cards can be dropped in box in front of Bldg. 2A.

Starting Spring 1977, the cards will be available when you register. Additional cards will be available in Bldg. 2A. **FAILURE TO SUBMIT CARDS ON DUE DATES WILL RESULT IN IMMEDIATE TERMINATION OF BENEFITS.**

The above policy was adopted due to recent changes in laws concerning veterans receiving benefits at educational institutions. With your cooperation, we can make sure your benefits arrive in a correct and timely

manner.

Also, new VA laws state that you must withdraw from a course within the first 30 days of the quarter. If you withdraw after the 30 days and receive an unofficial "W" at the end of the quarter, this fact will be reported to the VA. The VA will ask for reasons why you withdrew. If your reasons are not sound you will lose benefits for the entire quarter. If you receive an incomplete at the end of a quarter you must complete it by the end of the next quarter. If a grade (A-E) is not substituted at this time, this fact will be reported to the VA for their action.

If you are a high school completion student with the VA, you must attend Math Lab the same amount of hours per week as credits you are taking in the lab. You may go five hours one day, which will satisfy the whole week. If you only complete 15 hours, say for the month of Feb., and are taking a Math 86-54 class, then the Math Instructor will count you absent for 5 days, since you need to spend 20 hours a month in lab for that class.

If you have questions please call Steven Howard or Frank Brown at 756-5034 or stop in at Bldg. 2A.

Bellevue Bashes Titans 92-90

by Mike Knighton

A season of hard luck and disappointment continued for the TCC basketball team with a heartbreaking 92-90 loss to league-leading Bellevue, Wednesday, Jan. 12 at Bellevue.

The Titans, playing with only eight men suited up, jumped out to a 45-38 halftime lead behind a balanced scoring attack and a frantic full court press.

TCC came out even stronger at

the start of the second half, extending their lead to 59-44 with 16 minutes left. Bellevue then began to improve their shot selection and cut into the Titan lead.

Led by Tony Giles 12 points in the closing five minutes, Bellevue overtook the Titans in the final seconds for their fifth conference win in six games.

The loss was the third straight for TCC, dropping their season

record to 4-9 and their conference record to 1-5.

The Titans' sensational freshman Tony Turner led all scorers with 28 points. Gerald Brown added 18 for TCC, while Jerome Collins contributed 16 and Jeff Miller finished with 14.

Next action for the Titans will be Jan. 22 at Seattle Community College.

Women's studies for men as well

By Joan Fandel

If the name "Women's Studies" evokes in you the instant response "Women's Lib," you might stop and think again. It is a newly co-ordinated approach at TCC, utilizing the resources of many departments to help women entering or already participating in a college program.

And if you think it is strictly for women, again another misconception. It is basically to help give women at TCC guidance and

direction, but the basic study programs are for anyone.

For instance, the class titled, "What About Women" can be as beneficial to men as it is to women. It is a study in self-awareness, self-image, and self-assertion; all necessary skills in achieving good communication with those around us.

Another class is "The Woman Alone," with an unfortunate title which may keep some people away from a class excellent for both men and women. It is

equally good for the woman alone or with someone, as it is for the man alone or with someone: a course in the techniques used in getting to your feelings and dealing with them in a positive fashion.

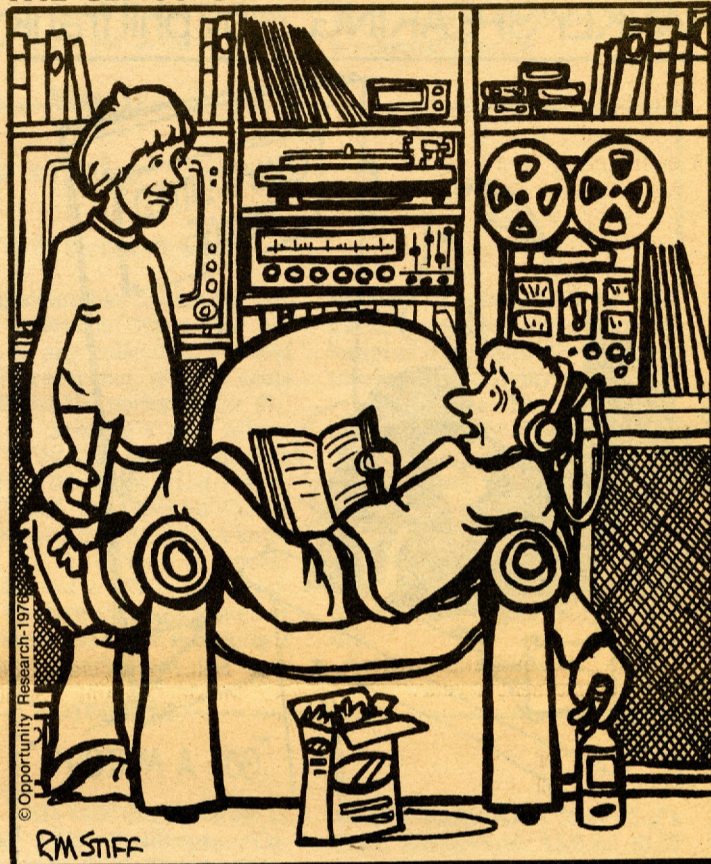
These classes are transferable in the social sciences field and afford those enrolled three credit hours. They are available and open to anyone on campus.

Next Week: Where are "Women's Programs" going at TCC?

Artist Wanted!

Donate work for the Collegiate Challenge Apply in Bldg. 15-18

THE CLASS OF '82"



I DON'T STUDY AT THE LIBRARY ANY MORE - I CAN'T CONCENTRATE ON MY WORK - TOO MANY DISTRACTIONS!

Give a hoot! Don't pollute!

Parking fees go to good use

Parking fees have not gone up this quarter.

It still costs \$1.50 per quarter, \$4 per year, to park on the TCC campus. Reserved parking remains at \$8 per year.

Fines for traffic violations are the same, too. Students who receive notices of violations, whether moving (such as exceeding the 10 mph speed limit) or parking, should appear at the Security office within 24 hours to

pay the fine. Parking violations are fined at \$1 for the first, \$3 for the second, and subsequent violations within the academic year, \$5.

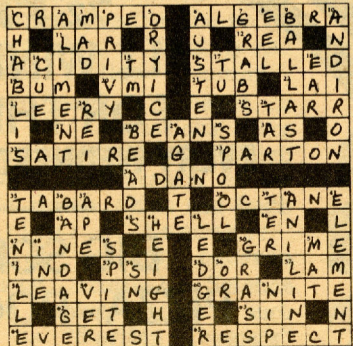
The money goes to good causes, according to Ms Judy Henning, receptionist for the Traffic Security Dept. in Bldg. 21, such as upkeep of parking areas, installation of new parking areas and building new exits and entrances on campus.

AWARE holds

rap sessions

Women's weekly brown bag rap sessions sponsored by AWARE will begin Thursday, Jan. 27, in the Library Conference Room (North wing of Bldg. 1) from 11:30-1:30. These informal drop-in rap sessions have been planned for all women on campus who want to talk or listen to other women about their needs, interests, concerns—whatever. Why not take some time for yourself and relax with some congenial people?

For additional information contact Lee Morrison, extension 5065, Norma Hamilton, Extension 5117, or Karen Becker, extension 5122.



Solution to last weeks crossword puzzle.

Have a PAP test. It can save your life.

American Cancer Society.

THIS SPACE CONTRIBUTED BY THE PUBLISHER

TRY OUR "RAMBURGER"!

"All 1/2 Pounders"

RAMBURGER - CANADIAN BACON BURGER - SPANISHBURGER

INCLUDES SALAD BAR - HOMEMADE SOUP - BAKED POTATO

COOK YOUR OWN STEAK OR RAMBURGER AND SAVE!

LIVE ENTERTAINMENT

THUR.,-FRI.,-SAT.
9 P.M.-2 A.M.

HAPPY HOUR DAILY 4:30-6 P.M.



THE RAM

19TH & MILDRED
—ACROSS FROM TCC—

Editorial

Cafeteria is over-priced

Let's take a brief look at our great Cafeteria. After reading the article on the Cafeteria, (page 1) it looks as though the place is well on its way to recovering from the \$68,000 loss they suffered over several years.

Domi Petrinovitch, Food Service Manager, contends that the prices in the Cafeteria are among the lowest on any campus. Regardless of what the prices are on other campuses, the prices in the Cafeteria are not low. They're overpriced, which is exactly why the Cafeteria is now at a break-even point.

When the Cafeteria should be providing a service to students, they're only over-charging students for food that is not very good and a place with very little atmosphere.

But at least, the coffee prices won't be going up. (At 40 cents a cup, they shouldn't be).

John Garletts
Editor

FRANKLY SPEAKING... by phil frank



© COLLEGE MEDIA SERVICES • BOX 9411 • BERKELEY, CA 94709

Letters and Opinions

Seattleite warns of city

Dear Editor,

A warning to all who are considering moving to Seattle - Beware: The city of Seattle is fast becoming a totalitarian dictatorship. For example:

1. The City Council has passed a Bicycle Registration Law which requires all city residents owning a bicycle to have it registered. When I called the Police Department to find out the impact of this new law on PD manpower, I was shuffled through four levels of pencil-pushers before getting a tense denial of any effect. To me this implies that another block of patrolman time will be taken up enforcing childish rules generated by Seattle's Law-and-revenue-mad City Council.
2. That same fatuous legislative group is considering a rent control ordinance. At public meetings to discuss the matter, a number of landlords gave utterance to their just fears concerning this possible threat to their financial security. A council member issued a stern warning to them concerning their out-

burst. Charity compels me not to name the various pressure groups who would probably have the council prostrated before them in contrite repentance at any deviation from these groups' desires. This is an instance of Seattle's craven partiality in government.

3. The city is broadcasting TV spots designed to encourage Seattle residents not to move to the suburbs. Of course, the motive behind this is to fleece the more productive members of society (those who are smart enough to move out and can afford to) of their taxes to pay for the kindergarten-level plans concocted by the city fathers.
4. Another case is the University of Washington. This venerable "Educational" Institution is in danger of losing about \$2 million in Federal Ed. giveaways. The loss would affect 18,000 students, about half the student body. The entire bureaucratic apparatus at the U would collapse if this happened, as the office staff would have to work when their work-study

students were terminated. And when this mob of government dependents is discharged to the streets, Seattle will have to increase the bite on those who work for a living to support it.

5. It isn't just the productive members of Seattle Society who feel the sole of the government foot. Numbers of recipients of assistance and hordes of unemployed are herded about like cattle by bureaucrats attempting to carry out the maze of regulations. People who actually want to work are ignored or put in humiliating jobs which cost the workers almost as much to perform as they are paid. Greedy public employee unions will not permit welfare recipients to do work for the city. Zoning and safety laws force people to live in places they can't afford, or parish in below-freezing parks.

It almost seems to me that the only people in this town who get a fair shake are the ones who make up the rules.

Signed
L. Sabine

Bookstore staff thanked

To the Editor,

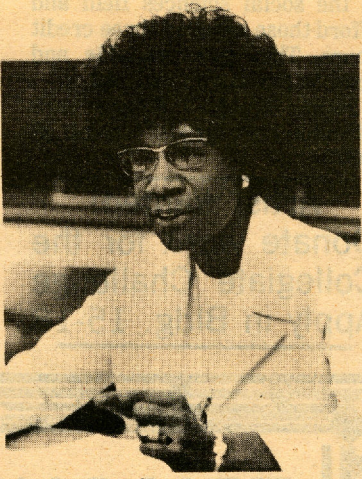
I would like to extend a word of thanks and appreciation to the people working in the TCC Bookstore. Mary Kennedy and her assistants should be commended for the work they have done in making the books, supplies, and other items readily accessible to the student. Despite

the long, tiring hours demanded during registration, the employees in the bookstore remain cheerful and ready to help the student in any way they can to be of assistance. The cheerfulness and ready-to-help attitude displayed by the employees, makes the bookstore a pleasurable place to do business.

If each one of us would reflect this type of positive attitude in the world around us and to each other, the world would be a far better place.

To Mary Kennedy and her assistants, Thank you.

Sincerely,
Wendy S. Pennell



Shirley Chisholm.

Shirley Chisholm cancelled

Congresswoman Shirley Chisholm's appearance in the Tacoma Bicentennial Pavillion which had been scheduled for Tuesday, February 8 has been cancelled.

"As a result," Troy Jella, Student Programs Advisor, said, "we have lost close to \$400 or \$500 in publicity costs." Ms. Chisholm's booking agent in New York told TCC that the cancellation was due to her Congressional responsibilities as Secretary of the Democratic Caucus. The ASTCC Program Board, which was sponsoring Ms. Chisholm's appearance, will make every effort to schedule her for an appearance at a future date.

Fellowships available to faculty members

A special invitation has been extended to community college faculty members to submit applications for 25 summer fellowships at Hamline University, St. Paul, Minnesota.

The four-week institute will focus on development and contemporary problems in Latin America. Dates are June 7-July 1, 1977.

Fellowships are awarded on a competitive basis covering all

tuition, room and board costs and, in addition, travel allowance up to \$175. Hamline will certify four semester hours graduate credit, if desired.

Deadline for receipt of completed applications is March 18. Grantees will be notified by April 15.

For further information and application forms, write Dr. John H. Harrigan, Director, Institute on Latin America, Hamline University, St. Paul, Minn. 55104.

The Collegiate Challenge

John Garletts
Editor

Dan Long
Campus Editor

David Webster
Arts Editor

Neil Herman
Photography Director

Steve Hunt
Business Manager

Mike Knighton
Sports Editor

Reporters: Steve Hunt, Steve Grandle, William Moorer, Lois Burnell, James O. Williams, Diana Hibbs, Eleanor Hill, Lorne Wood, Benjamin Smith, Reginald Carpenter, Leslie Boone, Lila Lee Vigil, Michelle Shovlain.

Photographers: Larry Cates, Scott Wellsandt, Cran Wilkie, Pat Hurley

Secretary: Mari Mittelstead
Advisor: Rachel Bard

The Collegiate Challenge is published weekly, except during examination periods and vacations, by the Associated Students of Tacoma Community College, 5900 So. 12th St., Tacoma, Washington 98465. Telephone 756-5042. Office in Bldg. 15-18.

The opinions expressed in this publication are those of the writer and not necessarily those of the Challenge.

1/2 PRICE!
ALL WINE DRINKS FOR THE GIRLS!
EVERY WEDNESDAY 6 P.M.-2 A.M.

BIG SCREEN TV
PIZZA - POOL - GAMES

"Try jo-jo's SUPERBURGERS & FRESH CUT FRIES"

THE OFFICE
3410 N. PROCTOR
PHONE 752-6262

Restaurants

The Antique Sandwich Shop is a pleasant place to eat

by Michelle Shovlain

After my 11:30 class the other day my stomach started to rumble and I began to think about getting something to eat, so I ambled up to the cafeteria. For some reason, the atmosphere didn't appeal to me that day. Don't get me wrong. I like to rub elbows with my fellow students and I really don't mind cigarette smoke but sometimes I like to eat my lunch without looking at other people's refuse or tasting their cigarette smoke in every bite. I was considering fasting when I bumped into a friend. I had an hour or so before my next class so I suggested going off campus to eat. I was not in the mood for any

of the fast food joints. I wanted to go somewhere quiet, somewhere with class.

"How about the Antique Sandwich Shop" my brilliant friend suggested.

The Antique Sandwich Shop is located on Pearl Street, two blocks from Point Defiance Park, a ten minute drive from school. No, the Antique Sandwich Shop doesn't sell antique sandwiches. They sell cheap food and not-so-cheap antiques.

The shop is a pleasant place. The room is large and airy. Old pictures, mirrors and tapestries

adorn the walls. The customers are seated at wooden tables and served by friendly, young people. The food is prepared behind a beautifully carved bar, the type you used to see in the old westerns.

The Antique Sandwich Shop serves a variety of sandwiches at prices ranging from \$1.75 to \$2.35. Stuffings include turkey, pastrami, cucumber and cream cheese and the old favorite, peanut butter and jelly (a very patriotic sandwich nowadays.) But by favorite delectable dish is the Chef's Salad. For \$1.75, I received a heaping plateful of

fresh lettuce, ham, alfalfa sprouts, tomatoes, cucumber, red cabbage, cheese and sunflower seeds topped with a delicious Ranch style dressing. My companion had a bowl of split pea soup (which was full of chunks of ham) and a warm bagel, at a cost of 75 cents. He assured me that happiness was a bowl of soup and a warm bagel.

For liquid refreshment the Antique Sandwich Shop offers (herbal and caffeinated) and healthful fruit juices. I recommend the apple-berry cider. For the java lover there is fresh ground coffee for 25 cents a cup

and free refills.

If there's still room in your stomach after your meal and you're not counting calories, you might consider a dessert. The cheesecake is sinfully rich and smooth. If you're a chocolate addict, try a piece of fudge. It will bring back memories of Grandma's fudge at Christmas, creamy and full of walnuts. Or have a piece of German Chocolate cake, or try a piece of moist applecake.

Lunch at the Antique Sandwich Shop can be a very soothing experience. It is a good place to go if you have an hour to spare and want good nutritional food at a reasonable price.

Cast chosen for

"View from the Bridge"

By Leslie Boone

Slated for Feb. 24, 25 and 26 is TCC's production of "A View From the Bridge."

Celebrated playwright Arthur Miller's drama is based on the themes of "love" and "honor." Set in New York, the story develops on the tragedy of Eddie Carbone's more than fatherly love for his niece, Catherine. Eddie had taken Catherine in as a child upon the death of her parents.

Catherine is a young woman now and Eddie, a man with a deeply ingrained sense of family honor, is ashamed of the feelings he holds for her. In his shame, he tries to make himself believe he doesn't feel anything more than a father's affection for his child. Though he vehemently at-

tempts to deny the attraction his wife has noticed, Eddie paradoxically tightens control over Catherine by forbidding her to date.

A love triangle is formed when Rodolpho, an illegal Italian immigrant of Eddie's family, arrives from Italy to stay in Eddie's home. Rodolpho and Catherine fall in love, creating a severe conflict for Eddie.

"A View From the Bridge" posts George T. Bolton, director and Chuck Cline, producer.

Cast members include: Marlene Lowenstein, Charene Seaton, Rick Valenta, Jorge Nelson, Gene Mineo, David Sides, Bruce Jarman, Pat Powers, Chris Hubert, David Dalin and Mike Curtiss.

Hobbies

Wargaming explained

by Dan Long

"Mein Fuehrer, the war is lost!"

It is unlikely that you have ever had that line uttered to you unless you—

A) were at one time Adolf Hitler
B) have played one of various numbers of wargames.

What exactly is a wargame? Wargaming is simulated warfare (either historical or fanatical) using printed maps to simulate

zerarmee Afrika, Operation Barbarossa, Ardennes Offensive, Wacht Am Rhein and the monster "War In Europe" (\$40.00-Publisher SPI) with approximately 100 square feet of map and over 2000 counters which represents the entire European campaign of WW II. This game in particular allows you to be an armchair general with almost the identical overview that the generals (English, Russian, German, American) saw during the war. Estimated time of play is 30 hours.

A current direction the hobby has been taking is "Fantasy and Science Fiction Gaming". Fantasy gaming is based on "what if" situations like "Invasion America" (which postulates the invasion of the U.S. by Russia, China and South America). "Sorcerer" (Magical conflict between conjured armies). Science Fiction gaming consists of such titles as "Starship Troopers" (Humans versus Arachnid "spider" creatures in the 21st century) "Outreach" (Galactic expansion in the 30th Century), "Battlefleet Mars" (revolt of earth settled Mars in the 21st century).

the land areas of conflict and small counters representing armies of troops, tanks, ships, planes or in the case of fantasy games; spaceships, aliens, etc.

Wargaming, I've never heard of it. I hadn't either until I was introduced to it by a fanatic friend. As he explained it — "It's the easiest way to go to war. No one gets killed and for that matter, no one even gets shot at."

The most popular of wargames are those that deal with World War II. Titles such as Pan-

Music

Kottke great; Santana stinks

by E. Scott Wellsandt

Got a couple of new albums for you this week, by Leo Kottke and a new one by Santana.

Leo Kottke is a fine guitarist that puts out a lot of personal feeling in his music. Kottke wrote all but one of the songs on the album. There are no vocals, its all instrumental which I found quite refreshing for a change. Kottke's style of playing is intriguing, its a down home slack string type of playing that sounds so fine.

This album has appeal for just about everyone, its a fine addition to any collection. I would rate the recording, (8) on a scale of 1-10 and the performance (9).

As for Santana's new album titled "Festival"-Ugh!! This has got to be the worst thing I have ever heard by Devadip Carlos Santana and friends. I don't know what he is trying to prove; probably not a whole lot. I suffered through three listenings of this record and ended up taking it off three quarters of the way

through, I couldn't take any more, it sounded like a poor attempt at jazz for awhile then they threw in some funky soul. It's a revolting noise. The next to the last song on the album is called "Try a Little Harder" I think Santana had better try a lot harder. I would rate the recording (6) and the performance (3).

Records for review are supplied by the good folks at Budget Records and Tapes in Highland Hill.

So long till next week.

Concerts



Steve Miller

THE STEVE MILLER BAND—Jan. 27 at the Coliseum. Tickets \$7.50 at the Bon Marche.

many Sci-Fi and fantasy games. If interested, some games are available from Tacoma's own Stadium Toy & Craft, or you can write Avalon Hill Games, 4517 Harford Rd. Baltimore, Md. 21214 or Simulation Publications, Inc., 44 East 23rd Street, New York. New York 10010.



If you want a game that isn't just checkers of if you have a desire deep down to conquer the world.....

KOOL AND THE GANG—Feb. 13 at the UPS Fieldhouse. Co-sponsored by TCC. Tickets \$3.00, \$4.00, \$5.00 available at the TCC bookstore, UPS, Records and Tapes Etc., and the Bon Marche Ticket office.

JACKSON BROWNE—Feb. 5 at the Paramount.

COUNTRY JOE McDONALD AND DAN HICKS — Jan. 26 at the Paramount.

AL STEWART—Jan. 20 at PLU's Olsen Auditorium. Tickets \$5.00 at the Bon.

FOGHAT—Feb. 3 at the Coliseum. Tickets \$6.75 at the Bon.

KANSAS & ATLANTIC RHYTHM SECTION—Jan. 29 at the Paramount.

NATALIE COLE — Feb. 4 at the Paramount

Registration extended

Registration has been extended for two new Home and Family Life courses, which will begin on Monday, Jan. 24. The courses are as follows:

HFL 92 Coping With Stress in Today's Society, 3 credits, 4:00-5:00, M, W, Th, Rm. 18-1: A layperson's guide to dealing with stressful situations. Local resources available in times of stress.

HFL 97 Parent-Child Interactions, 5 credits, 12:30-1:30 daily, Rm. 18-11: Methods of dealing with and changing children's problem behaviors, working towards more positive relationships between parents and children.

Interested persons should contact Pat Shuman, coordinator, at 756-5180 or 756-5076 as soon as possible.

These courses are offered primarily for their useful nature and will not necessarily be

transferable to other colleges for credit. They are ideal for the person who needs practical information in either of these areas.

10 MIN.

YOUR OLD LENSES
RE-SHAPED &
PLACED IN MODERN
FRAMES.

Columbian
Opticians

Open 5 nites
and all day Sat.
at Tacoma Mall.

Troy Jella: Student Programs Advisor and part-time musician

by Lorne Wood

Although you may not realize it, there are more things for students to do at Tacoma Community College than just attend classes. A few suggestions might include such things as films, speakers, workshops, clubs, organizations or any of the dozens of entertainment programs. Any event or program on campus represents, of course, many hours of work by students. There is someone else, though, that has a hand in every student program and event at TCC.

Troy Jella, 26, has been the Student Programs Advisor at TCC for about 11 months. His main job is to work with students that are employed as program chairmen; there are 16 such students. Troy gives these students responsibilities in certain programs and then helps each student do the job right.

As well as supervising all Student Programs and Activities, Troy is in charge of the Student Lounge, all ASB vehicles and the Publicity Shop.

Student Programs are not new to Troy. He was Student Body President at Fort Steilacoom Community College during the 1969-70 school year, as well as the Southern Regional Chairman and Vice State Chairman of the Washington Association of Student Governments. Jella graduated from the University of Puget Sound with a B.A. in Political Science and English Literature. Troy also served as a special assistant to Secretary of State A. Ludlow Kramer for a year.

Most of Jella's experience has been in music. He has been a professional musician for several years, and is currently working as a drummer and vocalist in a group called MADRIGAL. The group plays jazz, funk, soul and good old rock and roll. "We are a people's band," says Jella of his four-piece lounge group. "We like to entertain and play good music."

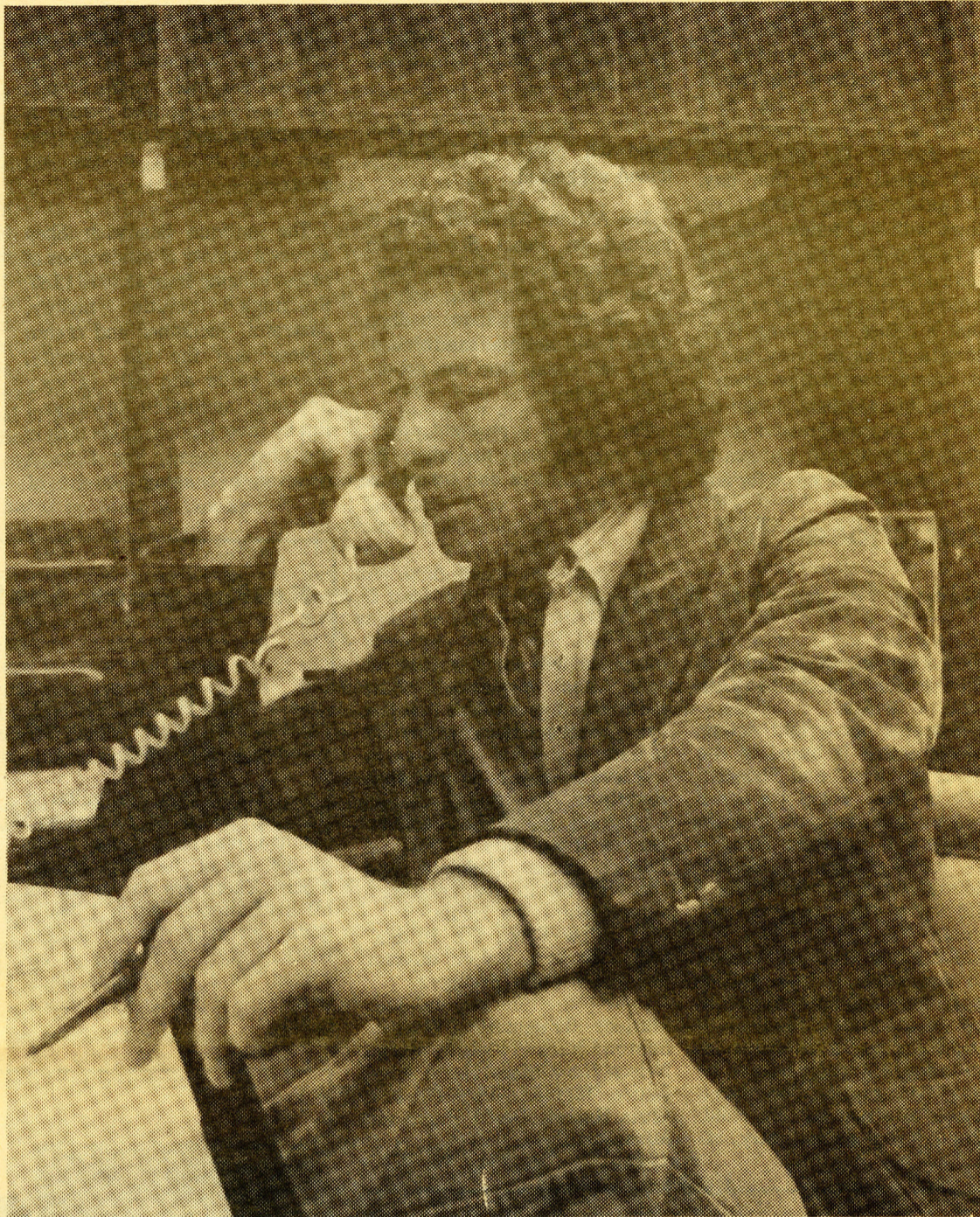
"I've always liked the area of student activities," Troy comments. "I like working with people and planning programs.

Basically, I like my job. There are a lot of rewards in it. It gives me enough flexibility that I don't feel tied down to a desk for eight hours a day. I can see things happening. There are times when it's frustrating. There are times when people make the job very difficult. That's true in any job.

Jella said that one of the biggest problems facing him now was that of a lack of cooperation among faculty members. "You see," says Jella, "most of the people that work here have worked here since the school has been in existence, and a lot of people have become entrenched. Student Activities have come and gone year after year. Sometimes there have been good activities, other times, the activities really haven't done too much to interest people enough to get involved. A lot of faculty or staff members are turned off. Without the support of the faculty and staff, you can't have the support of the students. If I were a student, and I didn't see a faculty member who was interested in at least announcing my programs, then why the hell should I be interested in it? Even if the staff member can't attend the activity, at least he should help make the information known to the student, because the student has the right to know about it. There's a way to fit that into a classroom situation without taking too much time away from the instructional responsibilities of the faculty member.

"I don't mean to say," Jella states, "that there are no faculty members on campus who support the activities. We do have some really interested people in the faculty who are trying to do a lot to help us out with our programs. The thing is, those people can be instrumental in getting a number of the other faculty members involved."

According to Jella, the location of the campus itself is a problem. "You have to realize," he states, "that this is a transient campus. Accessibility to the campus is too easy. If you go to Green River or Fort Steilacoom, you have only



Jella: "I've always liked the area of student activities."

Scott Wellsandt photo.

two entrances to the campus, or maybe three. Here, we have eight or ten entrances and exits, so this place is like a sieve. Everybody

comes on campus, then they just split. We are sitting right in the middle of a metropolis. There are just so many places that they can go to. There's really no reason to stick around. We don't have facilities that are conducive to putting on successful programs. If you live in Tacoma and go to Green River, once you get up on campus, you don't want to leave till it's time to go home. It's just a long way to drive. Green River has had some very successful programs."

Jella is sure, though, that, "the idea is to get a number of people interested in generating a cooperative spirit here at the

Bookstore hours announced

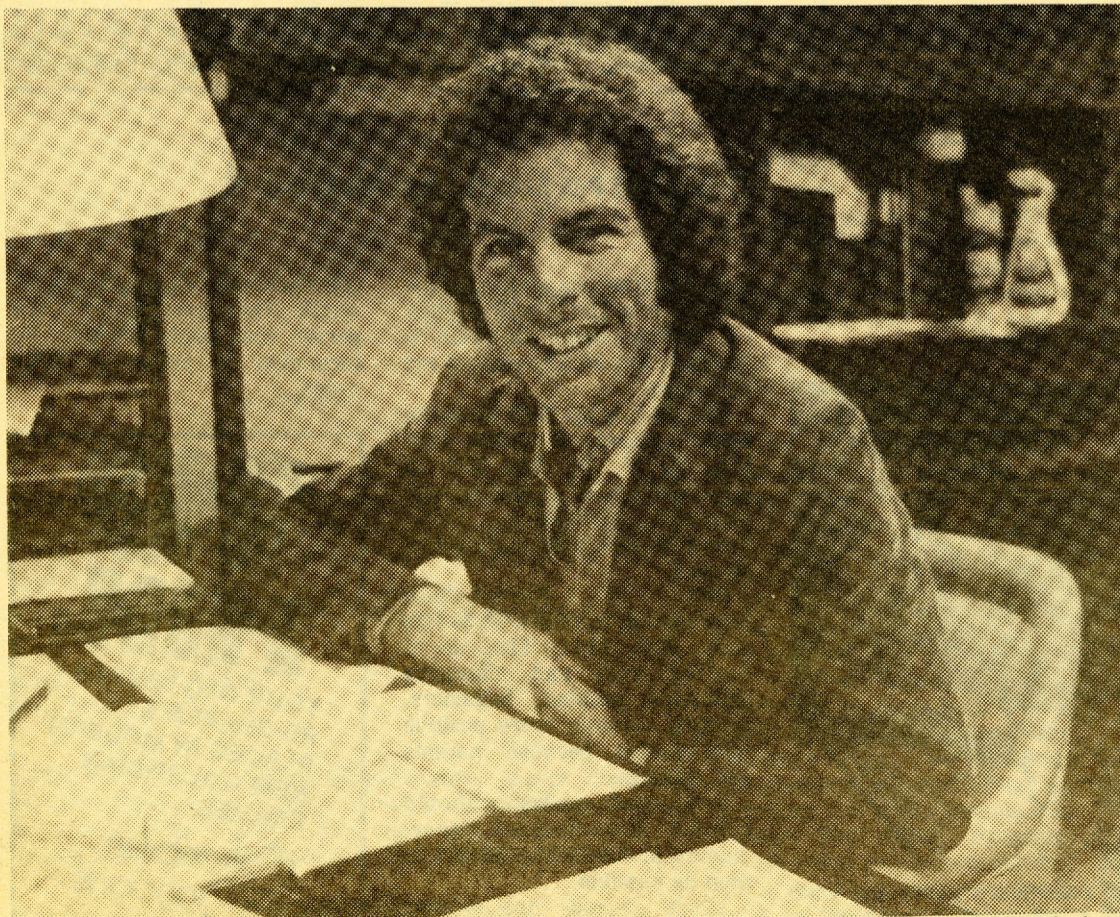
Hours in the bookstore this week are 7:45 a.m. to 4 p.m. Monday through Friday, and from 6:30 to 8:30 p.m. on Tuesday and Wednesday.

If you wish to have information published in the community, contact Eve Dumovich at least 10 days prior to the date you wished it published.

school." He would like to "give the students at TCC and the people that work here a feeling of identification and a feeling of pride in the institution. I would like to see a lot of team building emphasis in the next year," Jella said. "If we can do that, then we will be on our way to really achieving some significant goals."

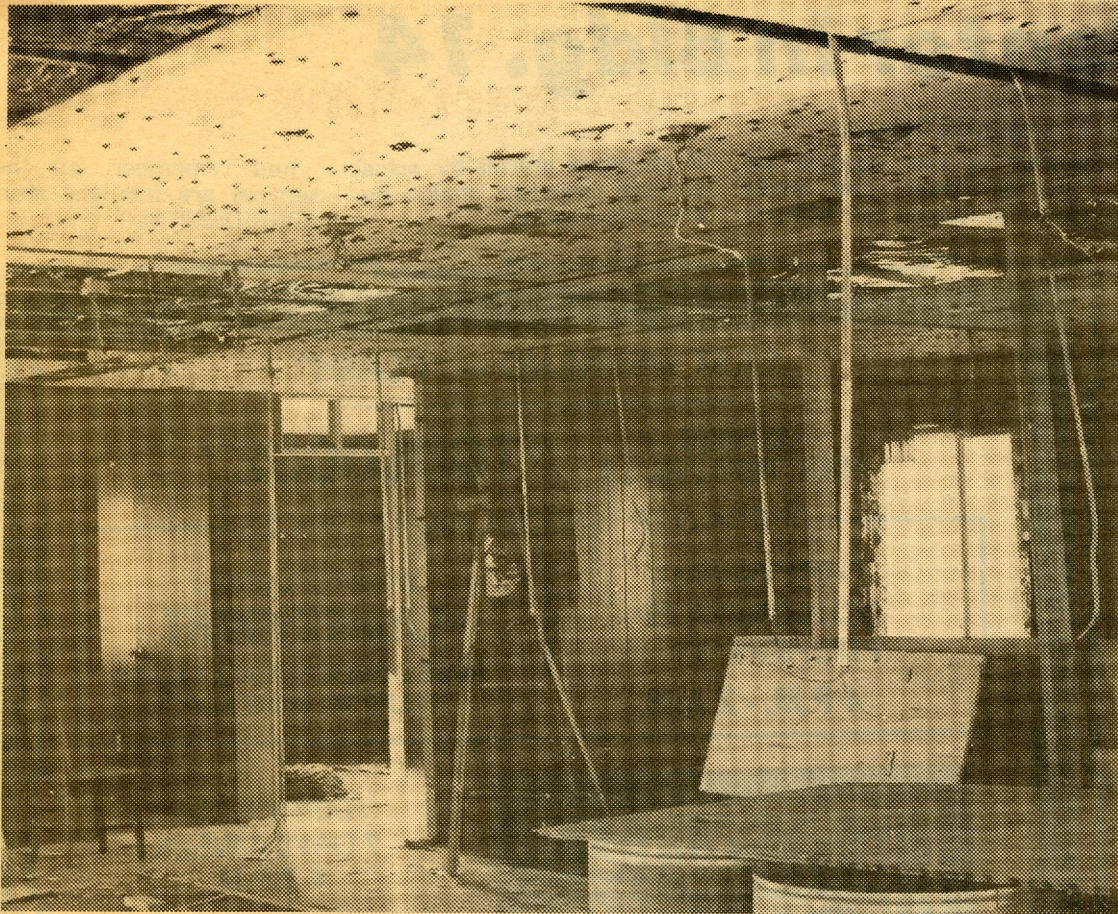
Even Troy himself can't say for sure how long he will be Student Programs Advisor here at TCC. He plans to take in some law education at Hastings University in Monerey, California. After that, Troy would like to go back East for some graduate work. Meantime he's spending about 80 hours a week on campus. "And my office door in Bldg. 14 is always open," he says. Or if you can't find him there, try the Fort Lewis NCO Club some evening after Jan. 18. That's the next gig for Madrigal.

PHANTASMAGORIA
383-2041
weaving equipment & supplies
JANUS & CLEMES spinning wheels
BEKA 24" Frame Looms - \$30-
hand carders - \$12.50
Drop Spindles - \$2- & \$3.50
YARNS - wool, cotton, jute,
goat hair, raffia, coir, etc.
1/2 block off Broadway Plaza
311 So. 11th, Tacoma



Student Programs Advisor, Troy Jella.

Scott Wellsandt photo.



The present look of TCC's games room.

Pat Hurley photo

New lounges to open in Spring

By David Webster

Remember Bldg. 17A? One day it sat quietly behind Bldg. 17, but the next morning...gone.

It's back and with another new portable building. They're located behind the cafeteria (Bldg. 11), and are setting up to house the two new student lounges.

Now scheduled to open their doors at the beginning of spring quarter, both lounges will offer various ways to spend your leisure time.

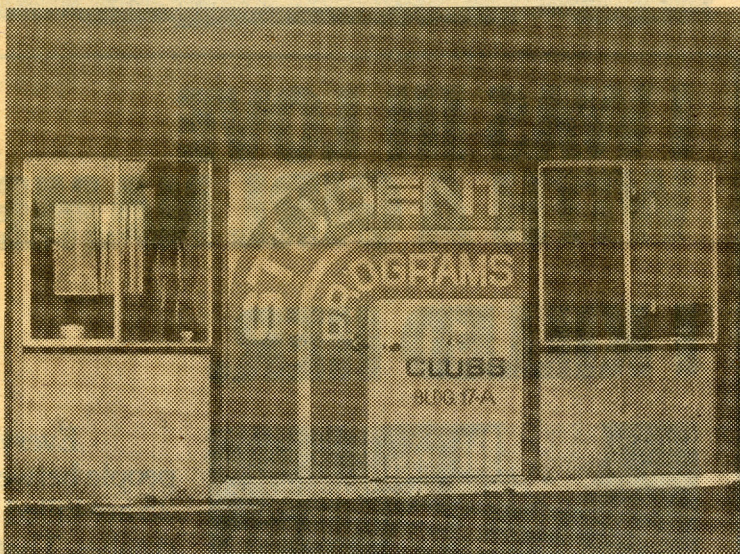
Those with a more competitive spirit will be able to battle it out with friends in the game lounge. It will be equipped with two new pool tables, video games, pinball, air hockey and foosball tables.

Work is progressing behind the colorful door of old Bldg. 17A, while next door the quiet lounge looks nearly finished.

With easy listening music in the background, the quiet lounge is "intended to facilitate an area where students can go to sit, read

a book, play chess, sleep or do anything in a relaxed atmosphere," says Troy Jella, the student program advisor.

The lounge will also be available for faculty members to reserve it for classes, workshops and guest speakers.



Bldg. 17-A, soon to be filled with pool tables and pinball machines.
Pat Hurley photo

Classified

STUDENT DISCOUNT AT THE POLYNESIA VILLAGE! \$25.00 off deposit plus reduced rental agreement. Fantastic residential facilities: pools, saunas, indoor basketball and handball courts, exercise room, boxing & workout room, foosball, pool tables, ping-pong, tennis courts, security guard. Rento from \$140.00. Co-signers accepted. Phone 752-7779. Located just off 6th & Pearl Sts.

For Sale

New (in the box) Lakewood No. 15331 2-piece bellhousing Mopar 383-440 (10 1/2 inches - 11 inches) with everything, hardware and instructions. \$100.00. Call anytime, including evenings. 973-7212 or 565-1035.

Fine Yamaha 12 string guitar for sale. Top quality case, extra strings, picks, plus more. Asking \$175.00 or best offer over. Contact Pat 572-2173.

WANTED 68 VW transaxle.
FOR SALE 65 VW 759-7860.

Heavy Chrome Dinette set with 4 chairs. Table size 36x48 makes into 36x72 with two leaves. Phone 474-7078.

FOR SALE

1969 Triumph 650cc, TR-6R \$600. Phone 858-9793 after 7 p.m.

Sony model 521 Stereo, reel-to-reel Tape Recorder with remote speakers. Good condition. Phone 474-7078.

1972 Cutlass Supreme. Auto., Bronze-gold with light-brown vinyl top. Good tires - Radials. Radio/heater/air cond. Rear-window defroster. Leaving for overseas! Must Sell! Phone 756-5115, Ask for Mrs. Gainer.

"Goodies for Sale": Banjo, 4-inch telescope with clock-drive, 3-speed bicycle, and a pair of nearly-new barstools. Call 565-4811.

Rides and Car Pools

Wanted: Ride to school, will help with expenses. From 6th and M. 572-4716.

Student needs ride from 1300 block of 6th Ave. Monday, Wednesday, Thursday and Friday at 1:30 and on Tuesday at 8:30. If you can help at any of these times contact Dottie Galloway at 756-5030 mornings.

Need ride from Parkland daily. First class 9:30. Will help with gas. Call 537-1588 for Jim after 5:00.

The Short Stop Restaurant
HALF PRICE SALE
Buy one sandwich - Get the next one for **HALF PRICE**.

OPEN
10509 Bridgeport Way
588-STOP

Guys & Gals the place to eat this year is the place that's best in the west by far!
SHORT STOP

Come and taste a Hamburger that tastes like a Hamburger should taste!
5 oz. Charbroil Hamburger
5 oz. Charbroil Cheeseburger
9 oz. Soulburger

If you're looking for a Roast beef Sandwich that tastes like a Roast Beef should taste, then come to the Short Stop where it will be your BEST stop, and your last stop. Across the street from H&R Block on Bridgeport.

STUDENTS STUDY CODE

The more we study
The more we know
The more we know
The more we forget
The more we forget
The less we know
The less we know
The less we forget
So why study!!!

Dan Long's
**Off the
top
of my
head**



PANOPHOBIA

So, dear readers, you've been anxiously awaiting the revealing of Panophobia. Panophobia — "an unusual aversion to anything" and if you think that's bad, then as they say in the business, "you ain't seen nothin' yet!". Read on:

- Agiophobia—a strange aversion to streets
- Apeirophobia—an abnormal dread of infinity
- Astraphobia—an aversion of anything astral
- Aulophobia—an unexplainable fear of flutes
- Ballistophobia— an unusual fear of missiles.
- Barophobia—a strange aversion to gravity
- Basiphobia—a morbid dread of walking
- Belonophobia—fear of compass needles
- Cainotophobia—fear of anything new
- Cometophobia—an unexplained fear of comets
- Crematophobia—a strange dread of money
- Dextrophobia—the fear of the right side
- Ereterophobia—an unexplainable fear of pins
- Graphophobia—a strange aversion to writing
- Harpaxophobia—an abnormal fear of rubber
- Homichlophobia—an unexplained fear of fog
- Ichthyophobia—an unexplained fear of fish
- Kristallphobia—an unexplained fear of ice
- Linonophobia—a strange aversion to string
- Mastigophobia—an abnormal fear of flogging
- Nomatophobia—an unusual dread of names
- Odontophobia—an abnormal fear of teeth
- Peniaphobia—an unusual dread of poverty
- Staibasiphobia—fear of standing upright
- Trichophobia—an abnormal fear of hair

I forgot this one—Columnphobia "an unusual aversion to reading another column like this"

EDITORS NOTE: All the above are actual true medical terms except Columnphobia which possibly should be.

Next week: "This is the city or an evening with Jack Webb"

Registration
underway for
special courses

**Free! Classified ads
are free to TCC staff
students and faculty.**

Registration is under way for four special courses for coordinators, teachers, administrators and counselors.

Classes will be offered at Pacific Lutheran University starting spring quarter.

Classes are: Ed. 344, Methods Bookkeeping and Data Processing for Teaching; Ed. 354, Methods for Basic Business Subjects; Ed. 449, Cooperative Education for Coordinators, Teachers, Administrators and Counselors; and Ed. 450, Methods and Materials for Distributive Education.

Registration forms and more information may be obtained from the campus information office, Bldg. 14.

**OPTICIANS
OPTICIANS
OPTICIANS**

**COMPLETE
GUARANTEED
SERVICE FROM
A COMPANY YOU
CAN TRUST**

**Columbian
Opticians**

7 STORES
Open 5 nites
and all day Sat.
at Tacoma Mall.

\$1.00

PITCHERS

**SCHOONERS - 20¢
EVERY MONDAY 4:30 - 9:00**

**BIG SCREEN TV
PIZZA - POOL - GAMES**

TUES-SUN.-4:30-5:30 — PITCHERS \$1.00

THE OFFICE

3410 N. PROCTOR
PHONE 752-6262

Campus Health Center in Bldg. 14

Where is the healthcenter on campus?

The Student Health Center, after several "moving" exploits, is now permanently located in Bldg. 14. (I always knew someday I'd move to the top — TCC administration was in 14, remember?). It is open for business every morning from 8:00 a.m. until 11:30 a.m.

This article is the first in a series to let you know there IS a Health Center available to you and to explain what kind of care you can receive.

Let's start with the most obvious. If there is ever an emergency on campus, you can call Security, ext. 5111, they will notify me and I will go to the injured person to give immediate care.

Another service we provide is minor first aid: Anything from a nose bleed to a hangnail. Come in

and we'll give you ice packs, nail clippers and bandaids; cold pills, cough medicine and aspirin; ace wraps, calamine lotion and antiseptic spray; and a couch, if necessary, where you can rest.

If you have concerns about abdominal, headache, leg or chest pain, a burn, a cut, a lump, or a bruise, and want to see a physician, give us a call. Every Wednesday, from 9:15 to 11:15, and Friday, from 12:15 to 1:15, a doctor is available to see you. If you have a problem that you would like to discuss with Dr. Blankenship, call our office for an appointment or drop in during his hours.

If you're concerned about a possible pregnancy, want contraceptives, or have questions about abortion or adoption; if you need information on child care, day care homes or centers, or have any other concerns for

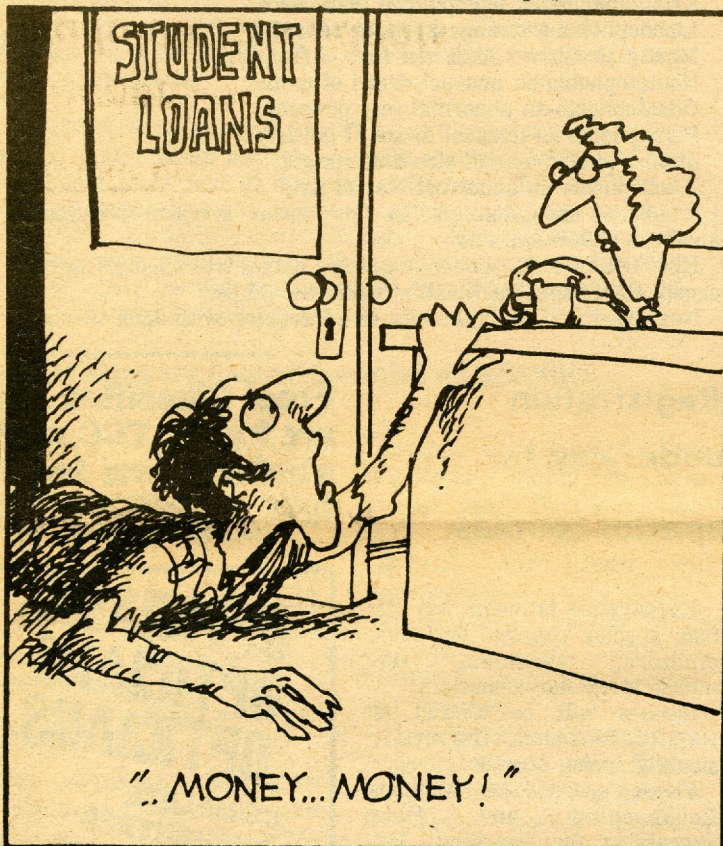
by Dottie Galloway

yourself or your children and need an answer, your Health Center on campus can help you.

If we cannot provide the actual service, we can make appropriate referrals!

And remember, all these services are free and strictly CONFIDENTIAL!

FRANKLY SPEAKING... by phil frank



© COLLEGE MEDIA SERVICES · BOX 9411 · BERKELEY, CA 94709

Summer Jobs may be available to students

Summer jobs analyses indicate that the prospects for college student employment for the summer of 1977 look promising. National parks throughout the nation will once again staff their facilities with college student summertime help. Opportunities appear to be expanding into many support accommodations and facilities surrounding the park areas. State parks also indicate a high demand for temporary summer employment by college students. Some national parks will hire as many as 3,000 college students for the summer period.

Several hundred private camps throughout the nation will once again be seeking college student summer employees in varied capacities as counselors, swimming instructors, music directors, and general activities such as maintenance, cooking, etc. Students with special talents in the area of entertainment or horse handling abilities should investigate these opportunities.

Once again it is emphasized that students desiring summer

employment in the various recreational areas throughout the nation should apply early. Students interested in obtaining additional detailed information may request a free brochure by sending a self-addressed stamped envelope to Opportunity Research, Dept. SJO, Lock Box 4000, Kalispell, MT. 59901.

**COPY
COPY
COPY**

WE COPY YOUR EXISTING LENSES & REPRODUCE THEM IN SMART NEW FRAMES.

Columbian Opticians

7 STORES Open 5 nites and all day Sat. at Tacoma Mall.

I WAS IN LOVE WITH A GIRL NAMED CATHY. I KILLED HER.



"It was last summer, and I was 18. Cathy was 18 too. It was the happiest summer of my life. I had never been that happy before. I haven't been that happy since. And I know I'll never be that happy again. It was warm and beautiful and so we bought a few bottles of wine and drove to the country to celebrate the night. We drank the wine and looked at the stars and held each other and laughed. It must have been the stars and the wine and the warm wind. Nobody else was on the road. The top was down, and we were singing and I didn't even see the tree until I hit it."

Every year 8,000 American people between the ages of 15 and 25 are killed in alcohol related crashes. That's more than combat. More than drugs. More than suicide. More than cancer.

The people on this page are not real. But what happened to them is very real.

The automobile crash is the number one cause of death of people your age. And the ironic thing is that the drunk drivers responsible for killing young people are most often other young people.

DRUNK DRIVER, DEPT. Y*
BOX 1969
WASHINGTON, D.C. 20013

I don't want to get killed and I don't want to kill anyone. Tell me how I can help. *Youths Highway Safety Advisory Committee.

My name is _____
Address _____
City _____ State _____ Zip _____

**STOP DRIVING DRUNK.
STOP KILLING EACH OTHER.**

